

# Subsea Ball Valves

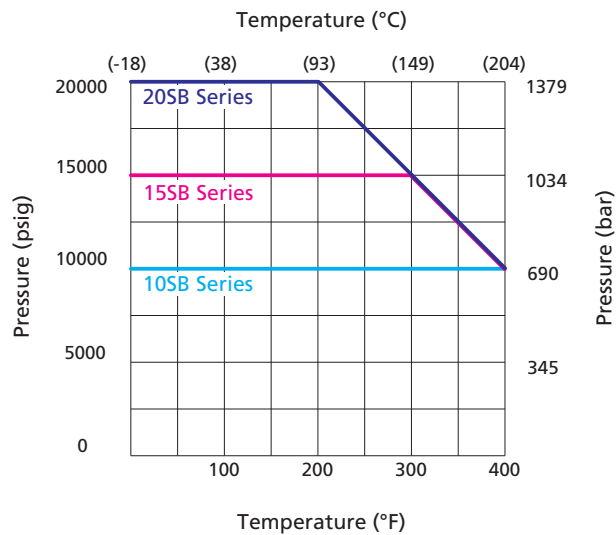
## 2-Way Valves, 3-Way Valves

### Features

- Working pressure up to 20,000 psig (1379 bar)
- Maximum external pressure: 6,000 psig (414 bar)
- NBR O-ring for operation from -10 to 250°F (-23 to 121°C); other O-ring materials available
- High tensile 316 stainless steel or S17400 stainless steel as standard material for valve body
- Paddle assembly optional
- PEEK seats offer excellent resistance against chemicals, heat and abrasion
- Full-port flow path to minimize pressure drop
- 2-way and 3-way valve configurations
- Bidirectional flow for 2-way valves
- Wide selection of tube and pipe end fittings available
- A variety of wetted materials optional
- Maximum water depth: 13,800 ft. (4200 m)

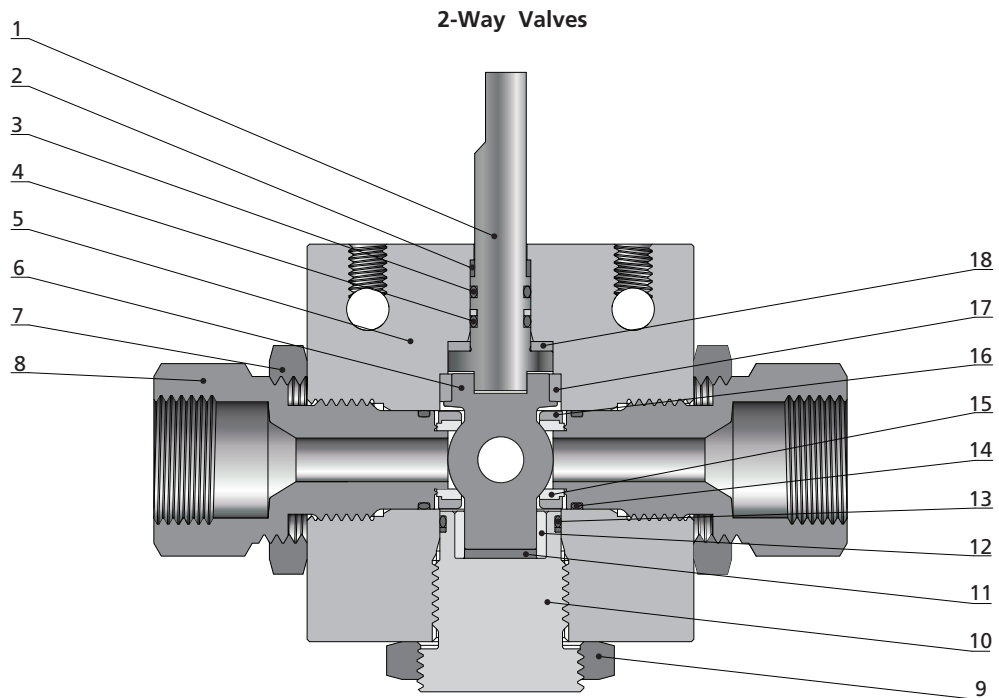


### Pressure vs. Temperature Curve



Note: The side connection is not allowed to work as inlet.

## Standard Materials of Construction



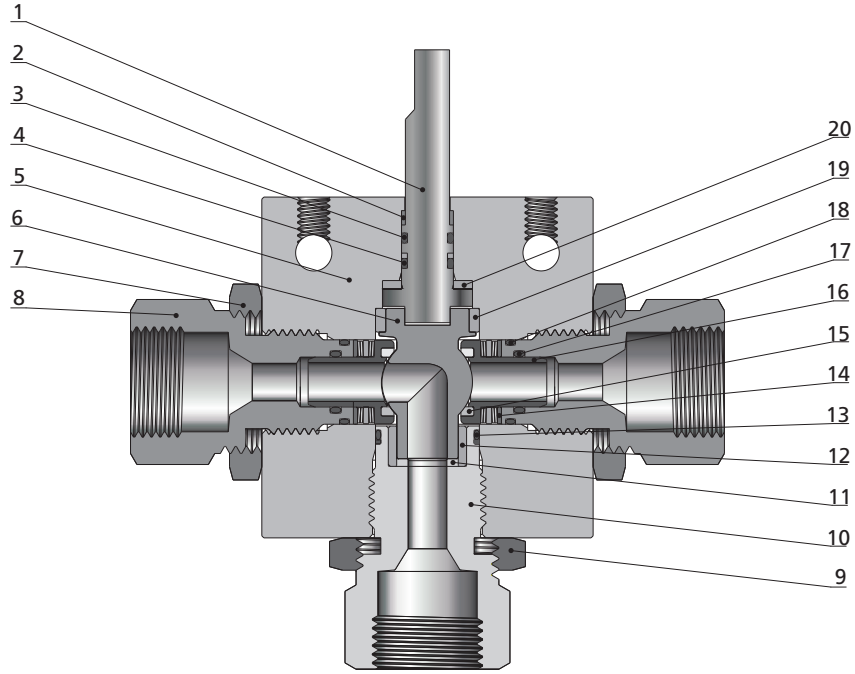
Item	Component	Material Grade
1	<i>Ball Stem</i>	316SS
2	Stem Backup	PEEK
3	O-Ring	NBR
4	<i>O-Ring</i>	<i>NBR</i>
5	<i>Body</i>	<i>316 SS / S17400 SS(For Orifice No. 16 Only)</i>
6	<i>Ball</i>	<i>316SS</i>
7	Lock Nut	316 SS
8	<i>Seat Gland</i>	<i>316 SS / S17400 SS(For Orifice No. 16 Only)</i>
9	Locking Piece	316SS
10	<i>Bottom Gland</i>	<i>316 SS / S17400 SS(For Orifice No. 16 Only)</i>
11	<i>Bottom Thrust Washer</i>	<i>PEEK</i>
12	<i>Bearing</i>	<i>PEEK</i>
13	<i>O-Ring</i>	<i>NBR</i>
14	<i>O-Ring</i>	<i>NBR</i>
15	<i>Seat</i>	<i>PEEK</i>
16	<i>Seat Retainer</i>	<i>316SS</i>
17	<i>Bearing</i>	<i>PEEK</i>
18	<i>Thrust Washer</i>	<i>PEEK</i>
	Lubricant	Molybdenum Disulfide/Fluorinated-Based

*Wetted components listed in italics.*

Fittings
Tubing
Quick Couplings
Line Filters
Valves
Sour Service Products
Subsea Valves
Part Number Crossover Charts

Fittings  
 Tubing  
 Quick Couplings  
 Line Filters  
 Valves  
 Sour Service Products  
 Subsea Valves  
 Part Number Crossover Charts

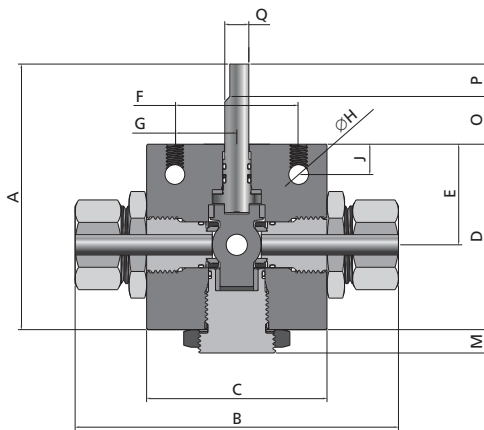
3-Way Valves



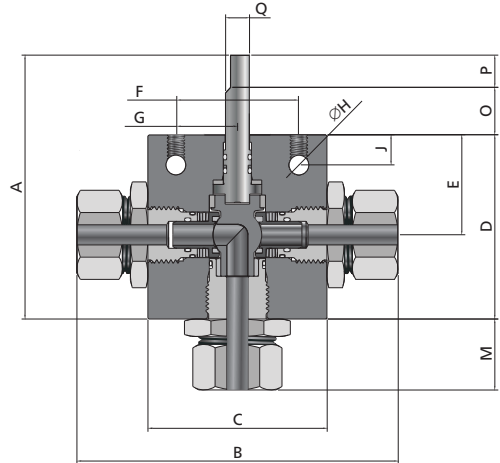
Item	Component	Material Grade
1	<i>Ball Stem</i>	316 SS
2	Stem Backup	PEEK
3	O-Ring	NBR
4	<i>O-Ring</i>	<i>NBR</i>
5	<i>Body</i>	316 SS
6	<i>Ball</i>	316 SS
7	Lock Nut	316 SS
8	<i>Seat Gland</i>	316 SS
9	Locking Piece	316SS
10	<i>Bottom Gland</i>	316SS
11	<i>Bottom Thrust Washer</i>	PEEK
12	<i>Bearing</i>	PEEK
13	O-Ring	NBR
14	<i>Belleville Washer</i>	S17700
15	<i>Seat</i>	PEEK
16	<i>Seat Retainer</i>	S17700
17	O-Ring	NBR
18	O-Ring	NBR
19	<i>Bearing</i>	PEEK
20	<i>Thrust Washer</i>	PEEK
	Lubricant	Molybdenum Disulfide/Fluorinated-Based

Wetted components listed in italics.

# Dimensions



2-Way Valves

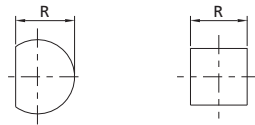


3-Way Valves

Flow Pattern	Orifice No.	Dimensions, in. (mm)										
		A	B	C	D	E	F	G	H	J	M	Block Thickness
2-way	4	4.31 (109.3)	4.20 (106.8)	2 (50.8)	2.53 (64.2)	1.28 (32.5)	1.5 (38.1)	0.75 (19.05)	0.28 (7.1)	0.43 (10.9)	0.35 (8.8)	1 (25.4)
	6	5.94 (150.8)	5.53 (140.4)	3 (76.2)	3.43 (87.3)	1.78 (45.2)	2.5 (63.5)	1.25 (31.75)	0.31 (7.9)	0.41 (10.3)	0.35 (8.8)	1.38 (34.9)
	8	6.67 (169.5)	7.72 (196.2)	4.12 (104.6)	4.23 (107.5)	2.07 (52.4)	3 (76.2)	1.5 (38.1)	0.31 (7.9)	0.5 (12.7)	0.61 (15.5)	1.75 (44.5)
	16	10.82 (274.8)	12.30 (312.4)	6.24 (158.6)	6.65 (169.0)	3.20 (81.3)	4 (101.6)	2 (50.8)	0.41 (10.4)	0.63 (15.9)	0.89 (22.5)	3.38 (85.7)
3-way	4	4.34 (110.2)	4.70 (119.5)	2.5 (63.5)	2.56 (65)	1.34 (34)	2 (50.8)	1 (25.4)	0.28 (7.1)	0.41 (10.3)	1.1 (28)	1 (25.4)
	8	6.67 (169.5)	7.72 (196.2)	4.12 (104.6)	4.23 (107.5)	2.07 (52.4)	3 (76.2)	1.5 (38.1)	0.31 (7.9)	0.5 (12.7)	1.45 (36.8)	1.75 (44.5)

Flow Pattern	Orifice No.	Dimensions, in. (mm)			
		O	P	Q	R
2-way	4	1.278 (32.5)	0.50 (12.7)	0.25 (6.35)	0.22 (5.48)
	6	1.24 (31.7)	1.25 (31.8)	0.44 (11.1)	0.38 (9.35)
	8	1.56 (39.7)	0.88 (22.2)	0.59 (14.9)	0.44 (11.13)
	16	2.41 (61.3)	1.75 (44.5)	1.25 (31.8)	1.00 (25.4)
3-way	4	1.28 (32.5)	0.5 (12.7)	0.25 (6.35)	0.22 (5.49)
	8	1.56 (39.7)	0.88 (22.2)	0.62 (15.9)	0.44 (11.13)

**Ball Stem Connection**



Orifice 4

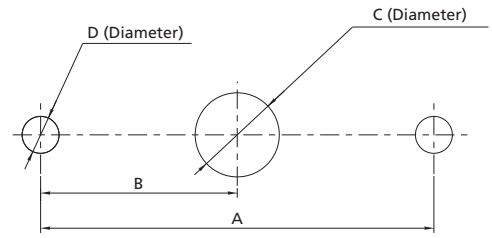
Orifice 6/8

All dimensions are for reference only and are subject to change.

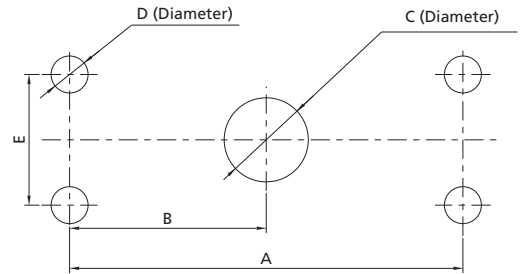
Fittings
Tubing
Quick Couplings
Line Filters
Valves
Sour Service Products
Subsea Valves
Part Number Crossover Charts

## Ball Valve Panel Mounting Dimensions

Flow Pattern	Orifice No.	Dimensions, in. (mm)			
		A	B	C	D
2-way	4	1.5 (38.1)	0.75 (19.05)	0.31 (7.9)	0.28 (7.1)
3-way	4	2 (50.8)	1 (25.4)	0.31 (7.9)	0.28 (7.1)

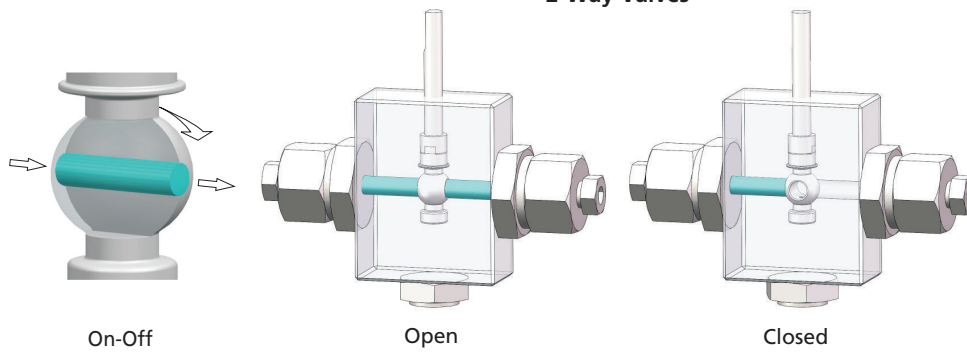


Flow Pattern	Orifice No.	Dimensions, in. (mm)				
		A	B	C	D	E
2-way	6	2.5 (63.5)	1.25 (31.75)	0.5 (12.7)	0.33 (8.5)	0.88 (22.3)
	8	3 (76.2)	1.5 (38.1)	0.69 (17.5)	0.33 (8.5)	1 (25.4)
	16	4 (101.6)	2 (50.8)	1.38 (35.0)	0.39 (10.0)	1.50 (38.1)
3-way	8	3 (76.2)	1.5 (38.1)	0.69 (17.5)	0.33 (8.5)	1 (25.4)

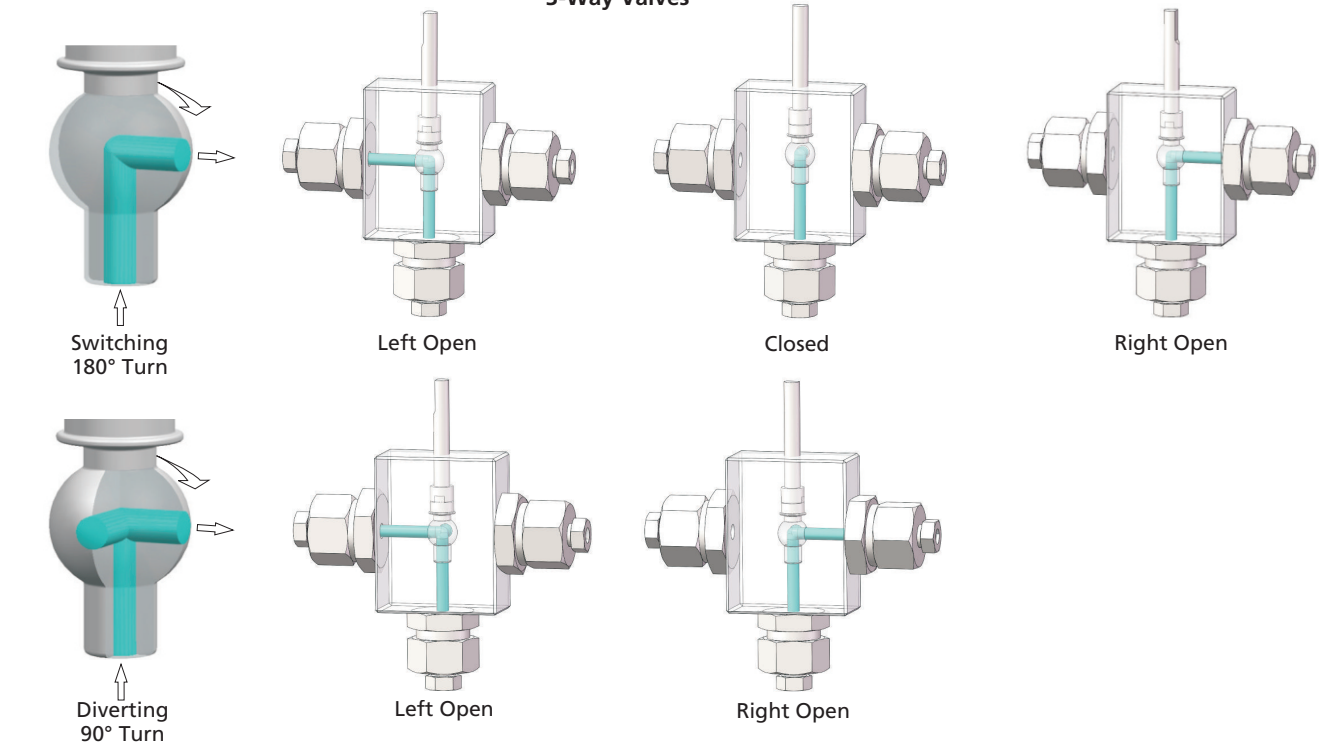


## Flow Configuration

### 2-Way Valves



### 3-Way Valves



## Ordering Information and Dimensions

Ordering Number	Flow Pattern	Connection	Orifice No.	Orifice Size in. (mm)	Cv	Working Pressure psig (bar)
10SBSS-MF12-8-1	2-way	MF12	8	0.5 (12.7)	10.2	10,000 (690)
10SBSS-MF16-8-1		MF16		0.5 (12.7)	10.2	
10SBSS-FNS12-8-1		FNS12		0.5 (12.7)	10.2	
10SBSS-FNS16-8-1		FNS16		0.5 (12.7)	10.2	
10SBSS-MF12-8-2	3-way	MF12		0.5 (12.7)	10.2	
15SBSS-DFF4-4-1	2-way	DFF4	4	0.128 (3.25)	0.26	15,000 (1034)
15SBSS-DFF6-4-1		DFF6		0.25 (6.35)	1.51	
15SBSS-FNS4-4-1		FNS4		0.25 (6.35)	1.51	
15SBSS-FNS6-4-1		FNS6		0.25 (6.35)	1.51	
15SBSS-FNS8-4-1		FNS8		0.25 (6.35)	1.51	
15SBSS-FNS4-6-1	2-way	FNS4	6	0.375 (9.52)	3.51	
15SBSS-FNS6-6-1		FNS6		0.375 (9.52)	3.51	
15SBSS-FNS8-6-1		FNS8		0.375 (9.52)	3.51	
15SBSS-MF12-8-1		MF12	8	0.5 (12.7)	10.2	
15SBSS-FNS4-4-2	3-way	FNS4	4	0.188 (4.77)	0.5	
15SBSS-FNS4-4-2D						
15SBSS-FNS6-4-2		FNS6		0.188 (4.77)	0.5	
15SBSS-FNS6-4-2D						
20SBSS-MF4-4-1	2-way	MF4	4	0.109 (2.77)	0.36	20,000 (1379)
20SBSS-MF6-4-1		MF6		0.203 (5.16)	1.23	
20SBSS-MF9-4-1		MF9		0.25 (6.35)	1.51	
20SBSS-HF4-4-1		HF4		0.094 (2.39)	0.26	
20SBSS-HF6-4-1		HF6	0.125 (3.17)	0.47		
20SBSS-MF6-6-1		MF6	6	0.203 (5.16)	1.23	
20SBSS-MF9-6-1		MF9		0.312 (7.92)	2.93	
20SBSS-MF12-6-1		MF12		0.375 (9.52)	3.51	
20SBSS-MF4-4-2	3-way	MF4	4	0.109 (2.77)	0.17	
20SBSS-MF4-4-2D						

Fittings

Tubing

Quick Couplings

Line Filters

Valves

Sour Service Products

Subsea Valves

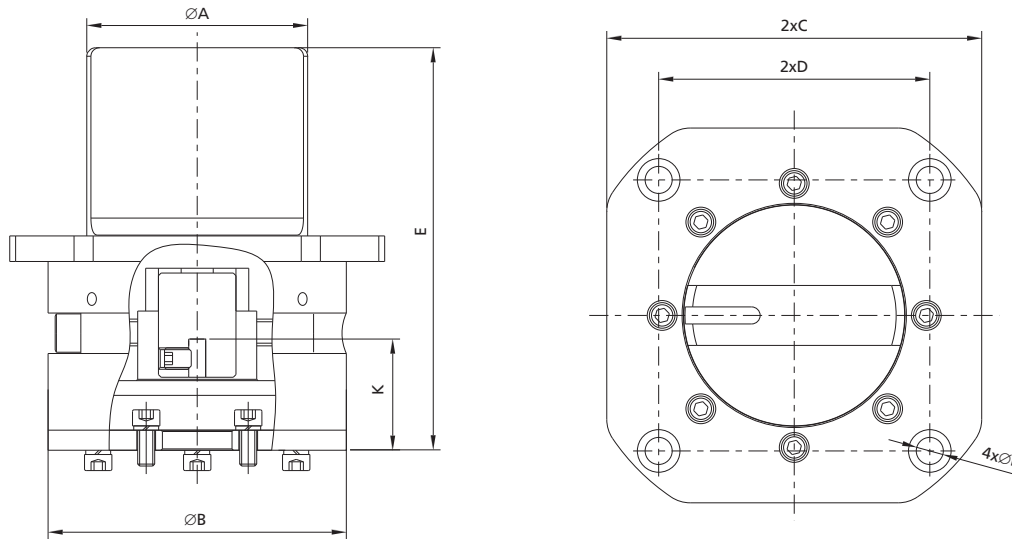
Part Number Crossover Charts

## Ordering Information and Dimensions (continued)

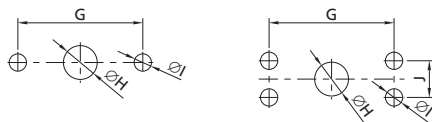
Ordering Number	Flow Pattern	Connection	Orifice No.	Orifice Size in. (mm)	Cv	Working Pressure psig (bar)
20SBSS-MF6-4-2	3-way	MF6	4	0.188 (4.77)	0.5	20,000 (1379)
20SBSS-MF6-4-2D						
20SBSS-MF9-4-2		MF9		0.188 (4.77)	0.5	
20SBSS-MF9-4-2D						
20SBSS-HF4-4-2		HF4		0.094 (2.39)	0.13	
20SBSS-HF4-4-2D						
20SBSS-HF6-4-2		HF6		0.125 (3.17)	0.22	
20SBSS-HF6-4-2D						

### Paddle Assembly Options

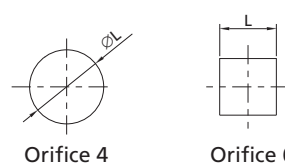
Paddle Assembly installed on the valve, is suitable for ROV or diver operation to complete the opening and closing or reversing of underwater valves. PAD is made of stainless steel, which has good corrosion resistance in the submarine environment. The limit design is adopted in the structure to prevent the overtorque of ROV from affecting the normal use of the valve, meeting API 17H specification of ROV interface tooling.



Bottom Mounting Hole



Stem Port



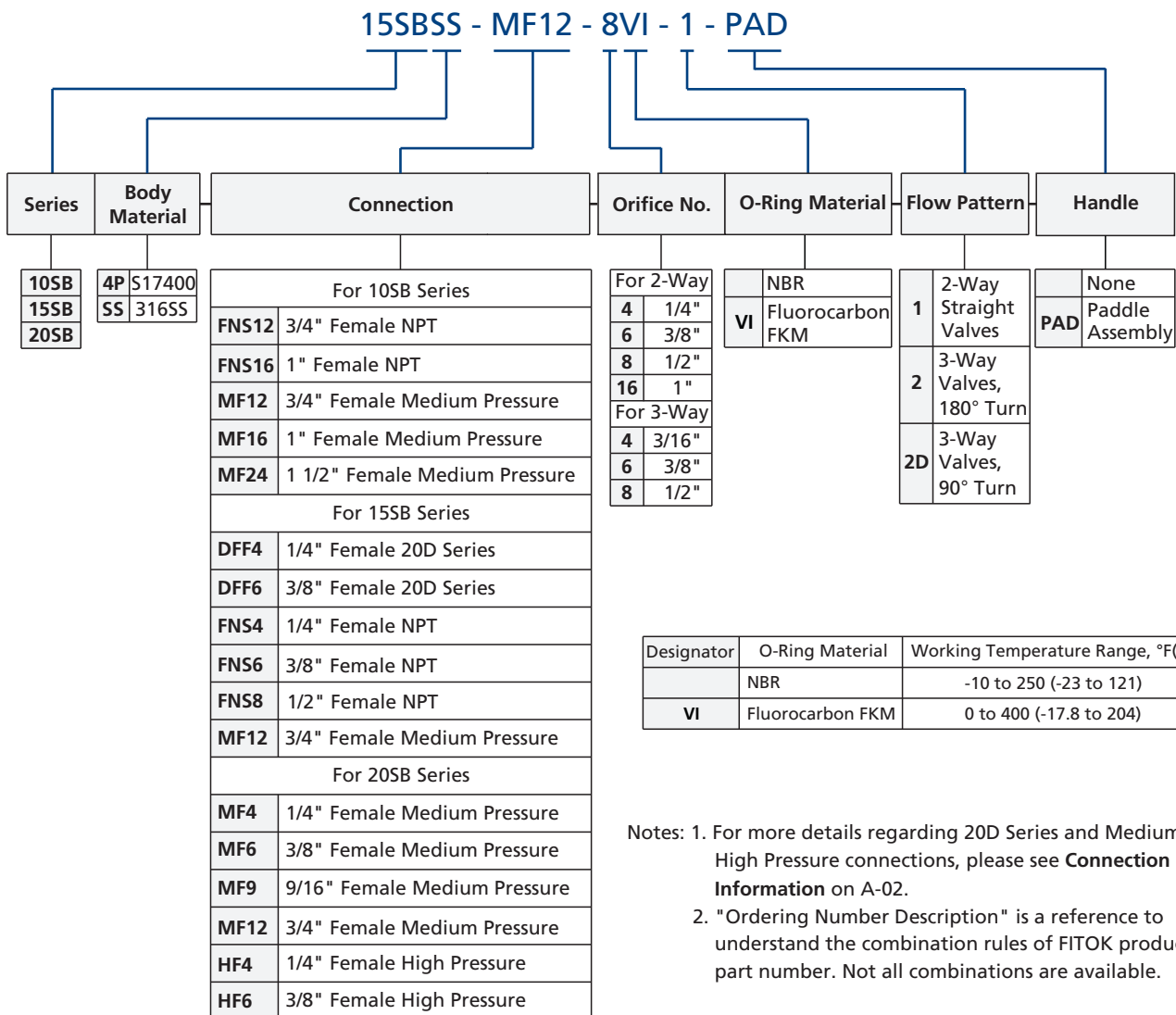
Orifice 4

Orifice 6

Note: To order valves with paddle assembly, add "-PAD" to the valve ordering number. Example: 20SBSS-MF4-4-1-PAD.

Ordering Number	Flow Pattern	Orifice No.	Dimensions, in. (mm)											
			A	B	C	D	E	F	G	H	I	J	K	L
SS-PAD-4-1	2-way	4	3.19 (81)	4.33 (110)	5.51 (140)	3.98 (101)	5.9 (150)	0.39 (10)	1.5 (38.1)	1.02 (26)	0.28 (7.1)	—	1.38 (35.1)	0.25 (6.35)
SS-PAD-6-1		6	3.19 (81)	4.33 (110)	5.51 (140)	3.98 (101)	5.9 (150)	0.39 (10)	2.5 (63.5)	1.44 (36.5)	0.33 (8.5)	0.88 (22.3)	2.5 (63.5)	0.38 (9.35)
SS-PAD-4-2	3-way	4	3.19 (81)	4.33 (110)	5.51 (140)	3.98 (101)	5.9 (150)	0.39 (10)	2 (50.8)	1.44 (36.5)	0.28 (7.1)	—	1.38 (35.1)	0.25 (6.35)

## Ordering Number Description



Fittings
Tubing
Quick Couplings
Line Filters
Valves
Sour Service Products
Subsea Valves
Part Number Crossover Charts